

# WHITNEY RECREATION CENTER

5712 MISSOURI AVENUE, LAS VEGAS, NV 89122

PHONE: 702-455-7576



## Hours of Operation

**Monday - Friday  
8:00 am - 6:00 pm**

**Whitney Recreation Center has a variety of activities and opportunities for your personal interests including sports, open gym, youth programs, fitness, and special events for all ages.**

**Stop by the front desk or call us at 702-455-7576 for more information.**

**Website:  
[www.ClarkCountyNV.gov/Parks](http://www.ClarkCountyNV.gov/Parks)**

## CLASS SESSION INFORMATION

**SESSION 4  
JUNE 3RD, 2024 - JULY 6TH, 2024**

**REGISTRATION  
WALK-IN: MAY 25TH**

### Closed

- **JULY 4TH - INDEPENDENCE DAY**
- **JUNE 19TH - JUNETEENTH**



togetherforbetter

**DANCE**

	Day	Time	Age	Price per Session	Teacher	Code
<b>Mini Movers Hip Hop Workshop</b> 6.11 , 6.25	Tue	4:00 pm – 4:45 pm	6-8	Free	Ms. Z	4 Whitney Classes
<b>Little Footsteps Workshop</b> 6.11 , 6.25	Tue	5:00 pm – 5:45 pm	5-7	Free	Ms. Z	4 Whitney Classes

**FITNESS CLASSES**

<b>Confidence Camp</b>	Tue	1:30-3:00pm	6-17	Free	Coach Smiley	4 Whitney Classes
------------------------	-----	-------------	------	------	--------------	-------------------

**OPEN PLAY**

<b>Adult Basketball</b>	Wed/Thurs	8:00 am - 12:00 pm	18-54	\$2	Drop in
<b>Senior Open Gym</b>	Wed/Thurs	8:00 am - 12:00 pm	55+	Free	Drop in
<b>Teen Open Gym</b>	Mon-Fri	12:00 pm - 4:00 pm	13-17	Free	Waiver must be completed

## SENIORS ACTIVITIES

Sit and Stretch	Mon/Tue/Fri	9:30 am - 10:15 am	55+	Free	John	3 Whitney Senior Trips
Bingo	Mon/Wed/Fri	10:30am - 12:00pm	55+	Free		3 Whitney Senior Trips
Pinochle Double Deck	Tue/Thurs/Fri	12:00 pm - 3:00 pm	55+	Free		3 Whitney Senior Trips
Wii Bowling	Mon/Tue	10:00am - 11:30am	55+	Free		3 Whitney Senior Trips
Senior Painters	Thurs	10:00am - 12:00pm	55+	Free		3 Whitney Senior Trips
Senior Open Rec	M-F	8:00 am - 10:00 am	55+	Free		3 Whitney Senior Trips
Crocheting & Sewing	Mon/Wed/Fr	12:00pm – 3:00 pm	55+	Free		3 Whitney Senior Trips
Mexican Train Dominoes	Mon/Wed	12:00pm – 3:00 pm	55+	Free		3 Whitney Senior Trips
Canasta	Mon/Wed/Fri	12:00pm – 3:00 pm	55+	Free		3 Whitney Senior Trips
Spades/Uno	Tue	10:30 am–12:00pm	55+	Free		3 Whitney Senior Trips
	Fri	12:00 pm – 3:00pm				
Senior Yoga	Wed	3:00 pm - 3:45 pm	55+	\$5 Per Month		3 Whitney Senior Trips
Senior Line Dance	Fri	3:00 pm - 3:45 pm	55+	\$5 Per Month		3 Whitney Senior Trips

## FITNESS ROOM

Whitney Recreation Center's fitness room offers a variety of equipment at a reasonable price. Memberships may be purchased on a daily, monthly, or yearly basis. New members must complete a fitness waiver. Equipment includes treadmills, stationary bikes, elliptical machines, free weight machines, dumbbells, and weight resistance machines. Youth 13-15 must be accompanied by an adult.

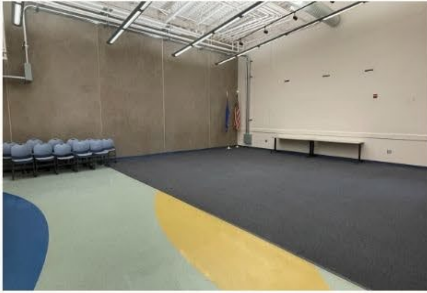
AGE	DAILY	MONTHLY	YEARLY
13-17	\$3	\$15	\$105
18-54	\$4	\$16	\$115
55+	\$1	\$5	\$35

## SCHOLARSHIP PROGRAM

Clark County is committed to providing low cost services to the public. The Parks and Recreation Scholarship Program provides financial assistance for classes and programs to qualifying Clark County residents (as funding is available). Scholarships are available through December 31, 2024. To apply, please request an application at the front desk, allow 2 weeks for the application to process.

*Please see front desk for a reservation request form. Forms take 5-7 business days to be processed.*

# Rent With Us



## INDOOR ROOMS:

**Gymnasium** – Can be used for sporting events, team building activities, large trainings, performances and more. Half gym is also available.  
Gym Maximum Occupancy – 500 participants.

**Classroom** - Perfect for small parties (i.e. showers, anniversaries, graduation parties, meetings, etc.).  
Maximum Occupancy – 40 participants.

**Warming Kitchen** - Must also rent the Community Room  
**Community Room** - Great for meetings, classes, and more.  
Maximum Occupancy – 80 participants.

**Note:** We do not allow helium balloons smoke machines, open flames, or alcohol in our facility.

## PARK:

**Gazebo:** This area has 6 tables and can be used for baby showers, family reunions and company BBQs Maximum Occupancy – 100 participants. No electricity outlets

ROOM INFORMATION	Occupancy	Community Rate	Commercial Rate
Community Room	80	\$80 for the 1st (2) hours	\$160 for the 1st (2) hours
		\$20 for each additional hour	\$40 for each additional hour
Kitchen	4	\$40 for the 1st (2) hours	\$80 for the 1st (2) hours
		\$20 for each additional hour	\$40 for each additional hour
Whole Gymnasium	250	\$100 for the 1st (2) hours	\$200 for the 1st (2) hours
(Sporting events only)		\$40 for each additional hour	\$80 for each additional hour
Half Gymnasium	125	\$70 for the 1st (2) hours	\$140 for the 1st (2) hours
(Sporting events only)		\$28 for each additional hour	\$56 for each additional hour
Standard Classroom	40	\$60 for the 1st (2) hours	\$120 for the 1st (2) hours
		\$ 20 for each additional hour	\$40 for each additional hour
Gazebo	99	\$60 for the whole day (7:00 am - 11:00 pm)	\$120 for the whole day (7:00 am - 11:00 pm)